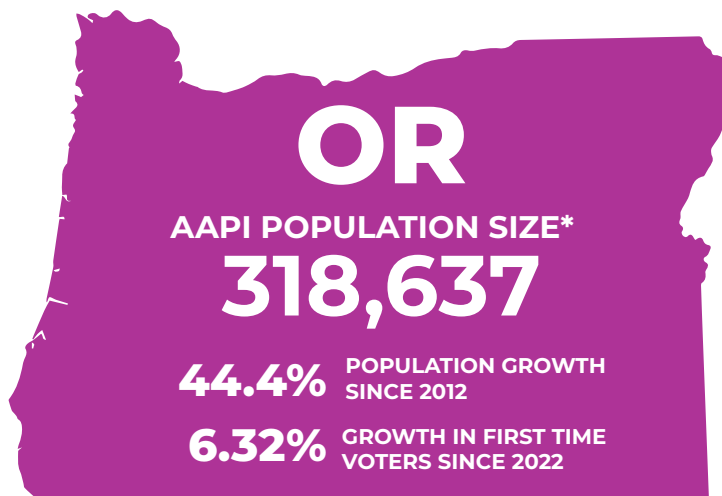


2024 AAPI Voter Demographics | OREGON

196,552
ELIGIBLE AAPI VOTERS*

34.6%
AAPI VOTER ELIGIBILITY
GROWTH (2012-2022)

6.14%
AAPI SHARE OF
ELECTORATE IN OREGON



53,832
FOREIGN BORN
NONCITIZENS

77,434
FOREIGN BORN
CITIZENS

169,121
NATIVE BORN
CITIZENS

* Includes multi-racial population

COUNTIES WITH HIGHEST AAPI POPULATIONS

	AAPI Share of County Pop	Size of AAPI Population	AAPI Eligible Voter Share of County	Number of AAPI Eligible Voters
Washington County	11.3%	67,926	16.3%	36,313
Multnomah County	8%	64,402	10.4%	44,031
Clackamas County	4.9%	20,437	6.4%	13,151
Lane County	2.7%	10,473	3.4%	6,677
Marion County	2.5%	8,596	3.6%	5,964

LARGEST ASIAN AMERICAN ETHNIC GROUPS IN OREGON



LARGEST NHPI ETHNIC GROUPS IN OREGON



2024 AAPI Voter Demographics | OREGON

AAPI CITIZEN VOTING AGE POPULATION (CVAP)

33%
Voters aged 50+

28.7%
Voters aged 18-29

VOTER ENGAGEMENT *(National Level Data)*

- Voter contact falls short for AAPIs. In the 2022 Asian American Voter Survey (AAVS), 56% of Asian Americans had no or uncertain contact from the Democrats. 66% reported the same from the Republicans.
- Of contacted Asian American registered voters, 44% reported outreach from Democrats, 35% from Republicans, 39% from community groups. Comparatively, in 2016, 48% reported Democratic outreach, 16% from the Republicans.
- 37% of registered Asian Americans did not identify with either party, signaling need and opportunity for voter education via outreach.

IMPORTANCE OF LANGUAGE ACCESS

Per the 2022 AAVS, of Asian Americans speaking non-English languages at home, 11% reported language barriers to voting and 42% stated voting assistance in their language would be utilized. *(National level data).*

49.1% of Asian American adults in OR **speak a language other than English at home.**

24.2% of Asian American adults in OR are **Limited English Proficient** (speak English less than “Very well”)

Chinese Vietnamese Tagalog Korean Japanese
(30,185) (27,209) (10,757) (10,342) (8,188)

Other Eastern Malayo- Marshallese Chuukese
Polynesian languages *(2,224) (1,681) (1,086)*

TOP 5 ASIAN LANGUAGES SPOKEN IN OR

TOP NHPI LANGUAGES WITH 100+ ESTIMATED SPEAKERS IN OR

SOCIOECONOMIC CHALLENGES IN OREGON



About 10.9% Asian Americans and 15.8% NHPIs in Oregon live in poverty.



About 5.0% Asian Americans and 8.9% NHPIs in Oregon lack health insurance.



About 10.9% Asian Americans and 14.4% NHPIs in Oregon lack broadband access.